

Supplementary Materials

Table S1 Raw data points of N₂ adsorption-desorption isotherms at 77 K

| Relative Pressure (P/P ₀) | Volume adsorbed @STP (cc/g) |
|--|--------------------------------|
| 0.04933 | 246.911 |
| 0.09981 | 254.934 |
| 0.14447 | 258.496 |
| 0.19569 | 261.231 |
| 0.246 | 263.274 |
| 0.29409 | 264.83 |
| 0.34468 | 266.226 |
| 0.39588 | 267.378 |
| 0.44633 | 268.462 |
| 0.49221 | 269.339 |
| 0.54341 | 270.275 |
| 0.59354 | 271.078 |
| 0.64179 | 272.012 |
| 0.69179 | 273.027 |
| 0.7408 | 274.285 |
| 0.78868 | 275.612 |
| 0.83837 | 277.475 |
| 0.8883 | 280.244 |
| 0.93809 | 286.633 |
| 0.89404 | 284.062 |
| 0.84485 | 281.4 |
| 0.79501 | 279.047 |
| 0.74599 | 277.384 |
| 0.69544 | 275.779 |
| 0.64533 | 274.642 |
| 0.59634 | 273.752 |
| 0.54759 | 272.907 |
| 0.49726 | 271.953 |
| 0.44967 | 269.943 |
| 0.39724 | 268.314 |
| 0.34889 | 267.159 |
| 0.29992 | 265.862 |
| 0.24957 | 264.351 |
| 0.19966 | 262.471 |
| 0.15225 | 260.182 |
| 0.10367 | 256.571 |
| 0.05324 | 249.157 |

Table S2 BJH pore size distribution desorption

| Radius (nm) | dV(r) cc/nm/g | dV (log r) cc/g |
|-------------|---------------|-----------------|
| 1.52263 | 0.01694 | 0.05933 |
| 1.70298 | 0.02177 | 0.08525 |
| 1.90791 | 0.02755 | 0.1209 |
| 2.14474 | 0.00824 | 0.04064 |
| 2.43121 | 0.00575 | 0.03215 |
| 2.77993 | 0.00472 | 0.03015 |
| 3.23081 | 0.00469 | 0.03485 |
| 3.84167 | 0.005 | 0.04414 |
| 4.6943 | 0.00356 | 0.03834 |
| 6.00452 | 0.00307 | 0.04223 |

| | | |
|---------|------------|---------|
| 8.32877 | 0.00179 | 0.03386 |
| 13.1571 | 7.40194E-4 | 0.02194 |

Table S3 BJH pore size distribution adsorption

| Radius (nm) | dV(r) cc/nm/g | dV (log r) cc/g |
|-------------|---------------|-----------------|
| 1.51363 | 0.01755 | 0.06111 |
| 1.69377 | 0.01434 | 0.05588 |
| 1.88914 | 0.01036 | 0.04502 |
| 2.12087 | 0.00803 | 0.03916 |
| 2.40951 | 0.00521 | 0.02889 |
| 2.75455 | 0.00526 | 0.03329 |
| 3.1939 | 0.00414 | 0.03735 |
| 3.77808 | 0.00395 | 0.03428 |
| 4.57523 | 0.00288 | 0.03027 |
| 5.79517 | 0.00248 | 0.03287 |
| 7.95313 | 0.00195 | 0.03531 |
| 12.914 | 0.00171 | 0.04968 |

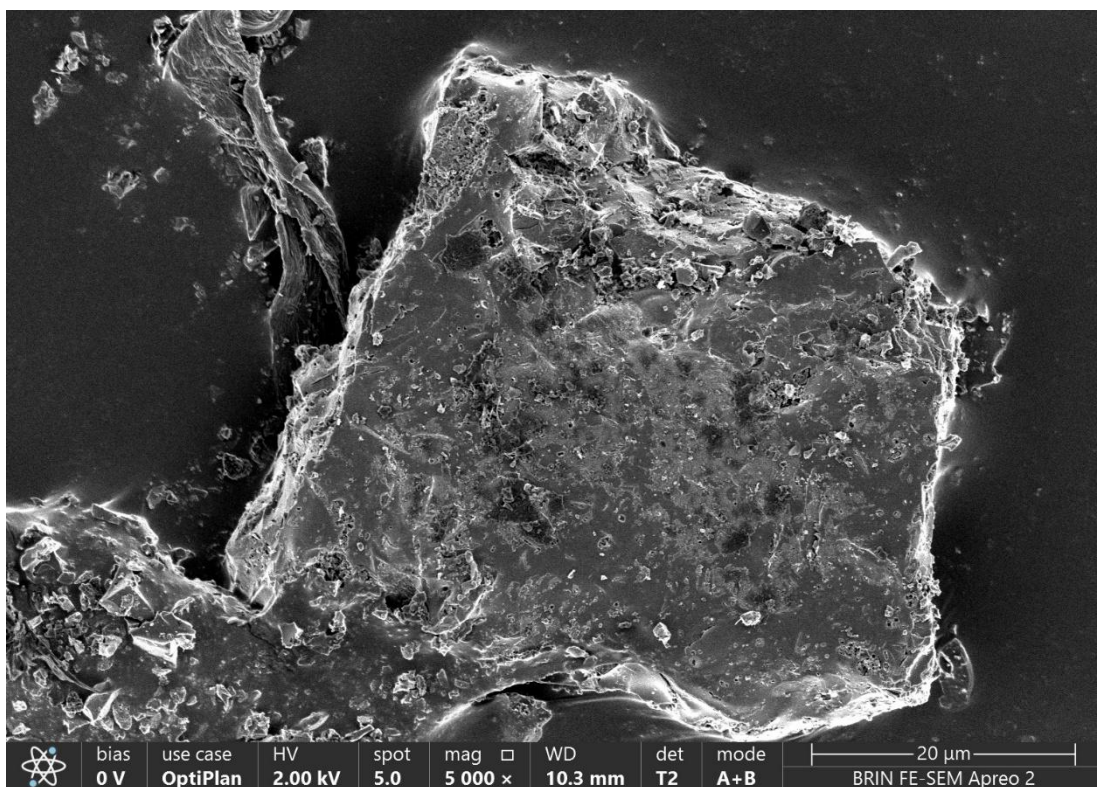


Figure S1 SEM photographs of activated carbon Acacia with magnification 5,000x

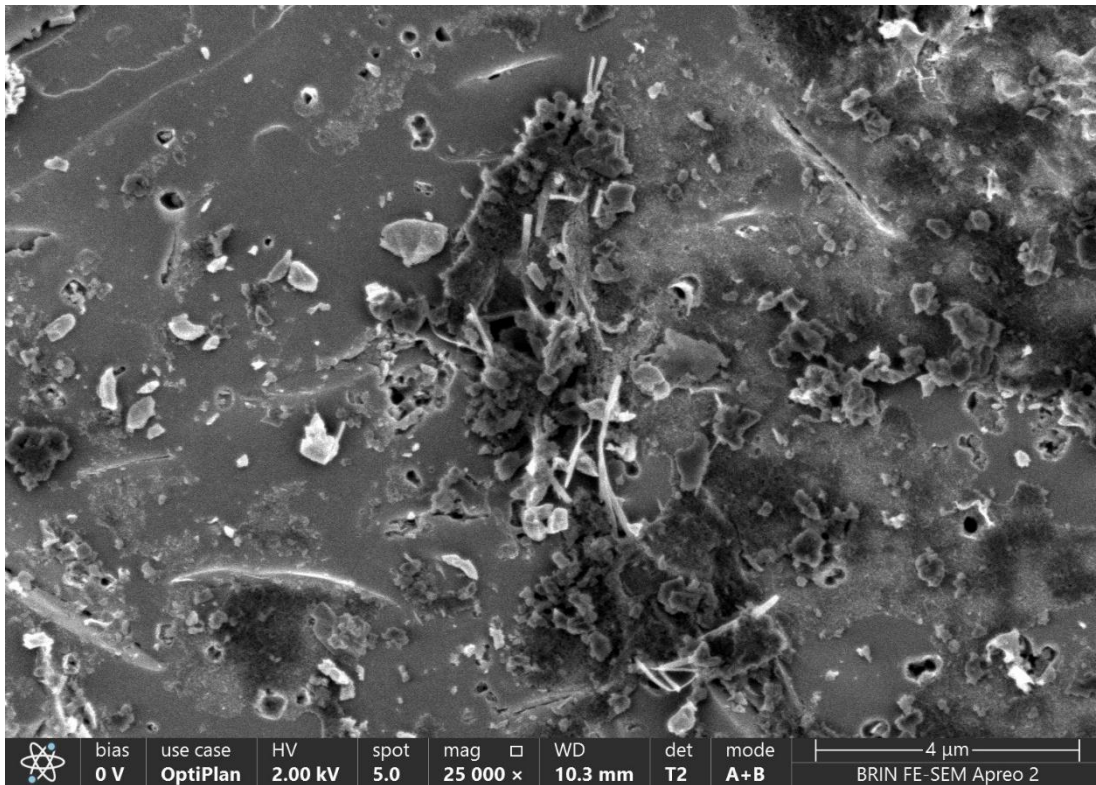


Figure S2 SEM photographs of activated carbon Acacia with magnification 25,000x

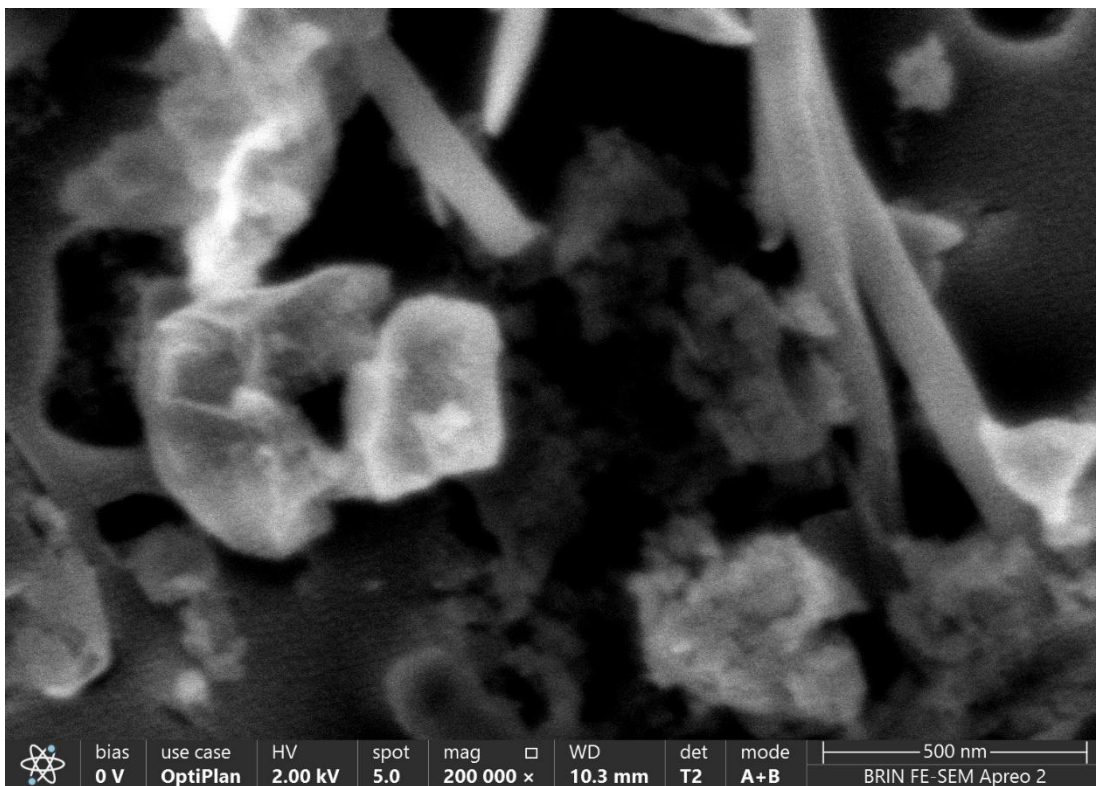


Figure S3 SEM photographs of activated carbon Acacia with magnification 200,000x